

Coulter Primary - Support for Families

COULTER PRIMARY
A PLACE WHERE EVERYONE STRIVES TO BE THE BEST THEY CAN BE

Coulter Primary School
Birthwood Road
Coulter
ML12 6PZ

gw14coulterpsoffice@glow.sch.uk

www.coulter-pri.s-lanark.sch.uk

The core values for our school community are:-

Responsibility, Courage, Equality, Respect and Honesty

Please read our Cost of the School Day Position statement on website

<http://www.coulter-pri.s-lanark.sch.uk/cost-of-a-school-day.html>

and useful information from South Lanarkshire Council

<https://www.southlanarkshire.gov.uk/MNTOP>

Free school meals are for Primary 1 to 5 pupils.

Toast and Go daily 10.30am

South Lanarkshire's Community Wellbeing Helpline

<https://www.nhsinform.scot/scotlands-service-directory/health-and-wellbeing-services/13236%201sla1116>

Please call the Helpline team on 0303 123 1009 if you want to know more about the services offered.

They can provide free and confidential advice on a range of matters such as:

- Identifying benefits which you may be entitled to, including Free School Meals, Clothing Grants, Education Maintenance Allowance and other welfare benefits
- Assisting in crisis situations such as having no money for food, gas or electricity
- Arranging referrals to other services including Money Matters Advice Services for benefit and debt advice and assistance.

The benefits system can be so complex with many people unaware of the benefits that may be available to them. We know of similar support provided in other schools with many families now better off due to the additional benefits being received as a result of making contact. In some cases, families gained thousands of pounds in backdated benefits.

School Uniform

We recycle school uniform so please send your child's old uniform to the school office for use by other families in our community. Before you buy new why not check with the office if we have any recycled uniform that would fit your child. 😊

We also need your old Halloween costumes, Christmas jumpers, party clothes, in fact anything that you think someone else would use, for our recycling rail. Why buy new when you can pick up at school for free 😊



Community Swap Shop

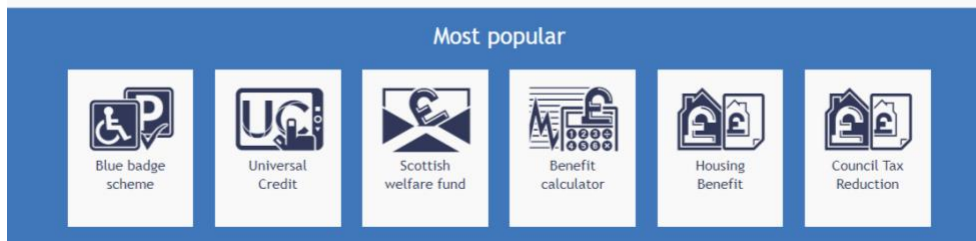
Lamington PS has many items outside the school that are free to take and please feel free to add items for others to use 😊



South Lanarkshire Council has financial supports for families who have children or young people in school entitled to means tested Free School Meal.

https://www.southlanarkshire.gov.uk/info/200259/education_benefits/159/school_clothing_grants_and_free_school_meals/2

Benefits and money advice



https://www.southlanarkshire.gov.uk/info/200134/benefits_and_money_advice



- We offer **free, confidential and impartial advice** - we can help check your benefit entitlement, assist with the claims process, challenge decisions and represent you at Social Security appeal tribunals. For debt issues we look at your financial circumstances, contact creditors, discuss options and give budgeting advice; **Contact number: 0303 123 1008**
- Our Telephone Advice Line offers a similar service specifically aimed at pregnant women and families with young children; **Contact number: 01698 453154**



Remember Sanitary Products are available FREE in school

Please contact the school office if you need to access a supply for your child during school holidays.

The public can access sanitary products by emailing

Free.Period@southlanarkshire.gov.uk

The Law ensuring free of charge period products in certain settings has come into force. Community halls, leisure centres, libraries, foodbanks and certain NHS premises are just some of the locations where products are obtainable free of charge.

Locations across the area can be found by downloading the **Pickupmyperiod** App (free on Apple and Google)

Aberlour Trust - Urgent Assistance Fund for families

Aberlour's Urgent Assistance Fund can provide cash grants to help families with children (aged 21 and under) who are suffering extreme hardship, including the impact of the Coronavirus. The fund offers support, usually via cash grants to assist with a range of needs, such as food, prepay power cards, clothing, bedding, or other essentials. The average grant is usually around £50 per child. All applications must be made by a sponsor (e.g. school, social worker, health care professional, clergy) on behalf of a child or family and are considered on an individual basis and needs assessed. Please click on the attached link for further information and details of application, [Aberlour | Aberlour Urgent Assistance Fund \(AUAF\)](#)

Scottish Child Payment

Families who meet the criteria and are eligible to apply will receive a payment of £10 per child, per week (equivalent to £520 per year) and payment will be made on a four-weekly basis. There are no limits to the number of children per family who can receive this benefit. If families would like to know more about this benefit and how to apply, they can contact Social Security Scotland by phone on 0800 182 2222, or look online at [My Gov Scot](#)

Best Start Foods Bonus!

For families already benefiting from the Best Start Foods here is a new offer they can take advantage of.

Customers who show their Best Start Foods card in Iceland stores can get a £1 bag of frozen vegetables when they make a minimum payment of £4.25

In Tesco, Best Start Foods customers who present their card will receive £1 off their total shop when buying fresh or frozen fruit and vegetables

For more information see link below;

[Social Security Scotland - Families encouraged to take up supermarket free veg offer](#)

Warm Home Discount Scheme

As the weather gets colder and heating bills continue to rise, lots of families will be worried about keeping the house warm this winter. Did you know you might be able to get £140 off your energy bills this winter through the **Warm Home**

Discount Scheme?

Please click for further information → <https://www.gov.uk/the-warm-home->



[discount-scheme](#)

Looking for support on money issues?



If you're looking for guidance, [@CitAdviceScot](#)'s Money Map tool can help point you in the right direction: <https://moneymap.scot>

Online safety advice for parents and pupils

- NSPCC info here - [Keeping children safe online | NSPCC](#)
- ThinkUKnow advice for parents - <https://thinkuknow.co.uk/parents/Listing/?cat=&ref=4765&keyWord=...> (this can be sorted for age, family dynamics and topics!)
- Advice for young people here - <https://thinkuknow.co.uk>

Biggar Mental Health Network

If you are feeling low, depressed, or suicidal, the below contacts are available for you:

- **Breathing Space:** 0800 838587 - Open 6pm-2am weekdays; Open 24hrs weekend (6pm Fri-6am Mon)
- **Samaritans:** 116 123 - Open 24hrs a day
- **Mind Infoline:** 0300 1233393 or Text: 86463CALM: 0800 585858 - Open 5pm-Midnight everyday
- **Childline:** 0800 1111 - Open 7.30am-3.30am everyday
- **Parentline:** 08000 282233 - Open Mon-Fri 9am-9pm; Open Sat & Sun 9am-12pm
- **Lanark Social Work:** 0303 1231008
- **SLC Community Wellbeing Helpline:** 0303 1231009 - Open Mon-Thurs 8.45am-4.45pm & Fri 8.45am-4.15pm
- **Beat:** 0808 8010677 (adult helpline); 0808 8010711 (youthline); 0808 8010811 (studentline); Offers information and advice on eating disorders
- **Cruse Bereavement Care:** 0808 8081677 - Open 10am-2pm everyday

Parenting Smart



Parenting Smart is a new website to help parents & carers support children's mental health & manage their behaviour. It's full of practical tips & advice on a range of topics including transition to secondary school, meltdowns, and sleep difficulties. <https://parentingsmart.place2be.org.uk>

The Rural Academy in Lanark



The Rural Academy are planning to start training courses in Lanark.

A **PDA in Education Support Assistant** - leads to work in the education sector to assist teaching in a class at all levels of education - Nursery, Primary and High School as well as ASN Schools, as well as further education opportunities.

The **REHIS and Customer Care** course, which is a good way to start a career in the Hospitality sector.

The **Business Admin** course which gives all the necessary tools to work in an office environment and build upon the skills learned in class.

All the courses run during school hours and covers a range of modules designed to get you ready for work in your chosen sector or build upon already existing transferable skills.

Call the Rural Academy on **07813367422** or email ruralace@slc.ac.uk for more information about the above courses.



A free, safe and anonymous digital mental health and wellbeing service is now available for young people.

[South Lanarkshire Council](#) has commissioned [Kooth](#) to provide the service for all 10 to 18-year-olds, and those aged up to 26 who are care experienced.

The Kooth website is accessible 24 hours a day, 7 days per week, 365 days a

year - and there are no waiting lists or thresholds to meet to qualify for support.

Further information:-https://www.southlanarkshire.gov.uk/view/news/article/1429/Safe,_accessible_and_confidential_digital_support_?utm_source=Twitter&utm_medium=social&utm_campaign=Orlo

South Lanarkshire "Worrying About Money?" Leaflet

The Food Aid Network have created a very useful leaflet for families who are worried about money. You can download the leaflet online [here](#). Please note you can order the leaflets in different languages.

Make It Work

Make It Work is a programme being delivered by Routes to Work South. This is targeted at parents with a disability, or health condition (including mental health, stress, or anxiety) with a view to increasing access to fair work opportunities and supports 60 parents move into good quality employment opportunities providing wrap around employability support, health, wellbeing, financial and childcare support.

If you know of anyone you feel would benefit from this programme, please contact Peter Shiels, for more details. Email:

Peter.shiels@southlanarkshire.gov.uk Tel: 01698 452058 Mob 07962121687.

Well Connected App

Well Connected is Lanarkshire's social prescribing programme that makes it easier for us to take part in and benefit from activities and services that we know can improve our wellbeing. The programme has been shown to help people by: improving self-confidence and self-esteem; reducing low mood; reduce feelings of stress; increase the number of people taking part in arts, leisure, education, volunteering and many other ways. The app is free to download and available on the Apple App Store and for Android by searching Well Connected Lanarkshire. More information about the app, other mental health topics and self-help resources can be found by visiting

www.elament.org.uk

Calm Distress

[Calm Distress is an online course](#) all about emotions, coping and wellbeing from NHS Lanarkshire Psychological Services for those living or working in Lanarkshire. All of us feel stress at times and it is entirely normal and sometimes it can even be helpful! But it can also get on top of us and we tip from stress into distress. This is where Calm Distress can help. The course has been designed for you to use in your own time. It is made up of five videos each one lasting about 20 minutes and downloadable booklets help you keep track of your progress.

Build your skills with fully funded online learning



If you're 25 or over and living in Scotland, you can get fully-funded access to unlimited LinkedIn Learning or an upgraded FutureLearn course. Whether you want to brush up your IT skills, learn a language or just

try something new, there are thousands of courses to choose from.

<https://careers.myworldofwork.co.uk/>

Clydesdale Citizens Advice

CAB is aware that a combination in cuts to universal credit, high energy bills and overall increased costs of living has created a perfect storm for many local households, who have found it impossible to make ends meet without taking out loans. Others have found they are unable to re-pay existing debts.

As a result, CAB is launching the local arm of the national Citizens Advice campaign, 'Debt Happens. You're Not Alone'. The month-long campaign aims to persuade people to seek expert debt advice from the CAB.

The Clydesdale CAB is based at 10-12 Wide Close, Lanark. Covid restrictions mean that they can only offer appointments- no drop-in service available.

Please call on 01555 664301 to arrange an appointment.

Free IT devices

Community Links (South Lanarkshire) has received a bank of donated ICT devices from South Lanarkshire Council to be redistributed to digitally excluded individuals in South Lanarkshire, completely free of charge.

Invitations are now open to refer families who would most benefit from these devices please contact the school office regarding completing a form confidentially which should then be sent back to office@biggar.s-lanark.sch.uk Recipients must meet the following criteria:

- **Digitally Excluded** - do not have an appropriate device at home
- **Low Income** - cannot afford to buy a device

Ownership of all devices will be transferred permanently to the recipients and

Community Links will provide trained Digital Champions to offer technical support and maintenance to end-users for at least one year.
Any questions, call **07834 652110** to discuss.

South Lanarkshire Debt Helpline

Please see the below information regarding a new debt helpline.
It is open to anyone within South Lanarkshire.

A poster for the South Lanarkshire Debt Helpline. It has a dark blue background with a yellow banner at the bottom. The South Lanarkshire Council logo is in the top left. The title 'South Lanarkshire Debt Helpline' is in large white letters. Below it, the aim of the service is stated: 'To provide a debt helpline for all residents in South Lanarkshire, which will operate over 6 days per week.' Then, it lists who can refer to the service: 'People can self-refer to the service by contacting the phone number below or emailing. We also welcome referrals from partner organisations.' Contact information is provided for more information (Jennifer Howdle) and for referrals (Helpline Number and Email). A yellow banner at the bottom lists the helpline hours: Monday, Tuesday, Thursday and Friday: 9am to 5pm; Wednesday: 9am to 7pm; Saturday: 9am to 12pm.

SOUTH LANARKSHIRE COUNCIL

South Lanarkshire Debt Helpline

Aim of the Service:
To provide a debt helpline for all residents in South Lanarkshire, which will operate over 6 days per week.

Who can refer to this service?
People can self-refer to the service by contacting the phone number below or emailing.
We also welcome referrals from partner organisations.

For more information contact:
Jennifer Howdle, Team Leader General Services:
07976174485
jennifer.howdle@hamiltoncab.casonline.org.uk

For referrals:
Helpline Number: 01698 757600
Email: SLDebtHelpline@hamiltoncab.casonline.org.uk

Helpline hours:
Monday, Tuesday, Thursday and Friday: 9am to 5pm
Wednesday: 9am to 7pm
Saturday: 9am to 12pm

The left side of a 'What's on Biggar' poster. It has a black background with white text. The title 'what's on Biggar' is in large white letters. Below it, it says 'Community calendar of events in & around Biggar'. There is a QR code and the website 'www.whatsonbiggar.com' with the Facebook link 'facebook.com/whatsonbiggar' below it.

what's on Biggar

Community calendar
of events in & around Biggar



www.whatsonbiggar.com
facebook.com/whatsonbiggar

The right side of a 'What's on Biggar' poster. It has a white background with black text. The title 'what's on Biggar' is in large black letters. Below it, it says 'What's on Biggar is a free community calendar for events and activities in and around Biggar' with the website 'www.whatsonbiggar.com'. Then, it lists 'Discover' with four bullet points: 'What's on for your particular interests', 'What's on for different age groups', 'What's happening in a local venue', and 'What local organisations have planned'. Next, it says 'Organising a local event?' with two bullet points: 'Share your event with the local community' and 'Check what else is happening on a given date'. Then, it says 'Contact us by email at hello@whatsonbiggar.com'. At the bottom, it says 'A community venture, designed and developed in Biggar' and 'Funding support from Biggar Community Council'.

what's on Biggar

What's on Biggar is a free community calendar for events and activities in and around Biggar
www.whatsonbiggar.com

Discover

- What's on for your particular interests
- What's on for different age groups
- What's happening in a local venue
- What local organisations have planned

Organising a local event?

- Share your event with the local community
- Check what else is happening on a given date

Contact us by email at hello@whatsonbiggar.com

A community venture, designed and developed in Biggar
Funding support from Biggar Community Council

Free Fire Detection Equipment Fitting

Available for Eligible Clients

Care & Repair service have some funding available for eligible clients to have interlinked smoke and heat detection, as well as stand-alone carbon monoxide detectors installed in line with the changes to Fire legislation in Scotland from Feb 2022.

Eligibility criteria:

- You must be owner occupiers in council tax band A-C
- You must live in Lanarkshire
- You must be in receipt of pass-porting benefits. (Income support, Jobseekers Allowance, Employment & Support Allowance, Pension Credit or Universal Credit.)

Please contact enquiries@careandrepair-sl.co.uk or 01555 666200 for further information if eligible

Social Security Scotland - advice on benefits

[Social Security Scotland](#) South Lanarkshire Local Delivery Team have a team of Client Support Advisors based in the local area. Clients wishing to engage with this service should in the first instance call Social Security helpline **0800 182 2222**. Client Support Advisors can provide support in the application process to clients in their own home, at Outreach locations, by Video appointments or by telephone appointments.

Adult Disability Payment

Adult Disability Payment has now opened for new applications across Scotland. The national rollout follows successful phased rollout in 13 Local Authority areas which replaces the UK Government's Personal Independence Payment. The benefit provides financial support to people aged between 16 and state pension age, who are disabled, have a long-term health condition or have a terminal illness. [The form to help people apply for Adult Disability Payment can be found here](#) and contains guidance on who should use this form, how to return it, and how to send supporting information.

Financial support

The following financial support is available for people and families on low incomes or who have children entitled to free school meals. Click [Financial support - South Lanarkshire Council](#) to find out about financial support you are entitled to over the summer.

Support for Care Experienced Young People from Who Cares? Scotland

Who Cares? Scotland, thanks to support from the Youth, Family and Community Learning Service (YFCL) in South Lanarkshire is offering a summer programme for care experienced people from across South Lanarkshire! This offer is open to care experienced people aged up to 26 years as individuals, or older if they are care experienced parents.

1. **Self Directed Activities** – We can provide payments of up to £50 per young
2. person to take part in an activity with their friends or family. These payments
3. will be made directly into the young person's bank account (or trusted adult
4. depending on age). The form to request these payments can be accessed at:
5. <https://whocaresscotland.typeform.com/to/t3auz5mq>
6. **Group Activities** – Our Who Cares? Scotland participation groups in South
7. Lanarkshire will be taking part in trips and activities. We can also fund trips
8. for groups of care experienced people alongside adults in their lives (carers,
9. social workers) etc., but we would emphasise that our payments can only
10. cover young people and families, not adults attending in a professional role.
11. We would ask for a contribution from relevant services to cover those costs.
12. For group events please email cholt@whocaresscotland.org with
13. information about your idea/trip and we'll take it from there

Children 1st Parentline

A helping hand for every family in Scotland

Do you feel like you're at the end of your tether?
Children 1st Parentline is here for you and your family.

If you live in Scotland call **08000 28 22 33** free,
browse our website for advice and support, or
start a webchat.



You can talk to us seven days a week

- Mon-Fri, 9am to 9pm
- Sat-Sun, 9am to noon

<https://www.children1st.org.uk/help-for-families/parentline-scotland/>

Please check out the support below :


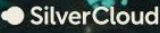
<https://www.nhslanarkshire.scot.nhs.uk/physical-activity-prescription-pap-initiative/>

Understanding your child's feelings - Dip your toes in the world of online courses for parents, grandparents & carers - ALL FREE

<http://www.inourplace.co.uk/>

What's the code?

- If you haven't used it already here is the access code for all the online courses (funded for residents of South Lanarkshire): **OWEN123**
- If, like many parents, you have already used this code, log into your account [here](#) and this course will be ready in your dashboard to start whenever you are ready




New Programme:

Supporting An Anxious Teen

For parents, teachers and carers of children aged 12-18

What you will learn...



Parenting An Anxious Teen Empower you to recognise and focus on the helpful sides of anxiety.	Changing Thoughts Learn how the use of externalization to unite you and your child against the common enemy of anxiety.
Parenting Positively Learn how to respond more positively when your child is experiencing anxiety.	Facing Fears Facilitate recognition of the importance of teenagers facing their fears, rather than avoiding them.
Changing Anxiety Learn how to use key CBT skills to help your child make changes which reduce their anxiety.	Creating A Plan Supporting you in ongoing anxiety management planning.
Problem Solving Learn how to facilitate positive communication channels between parent and child.	Going Forward Enhance understanding of the importance of self-esteem and resilience in staying healthy.

Get started by searching online for our website, LANARKSHIRE MIND MATTERS and look under HOW WE CAN HELP YOU

MPFS/ANXTEN/22/202161

Who can I get to fix this?



Clydesdale Handy Folk, is a new and free home maintenance service from CCI/Healthy Valleys, to help older people in Clydesdale with small, non-emergency, home maintenance jobs.

For many people tasks like changing a light bulb, and small DIY jobs can become a barrier to living safely in their own home.

We are here to help with small jobs for example

- Setting heating timers
- Tuning in your TV
- Hanging Curtains
- Moving Furniture
- Simple household fixes

If this is something you might be interested in or know someone who might benefit, give us a call!

Contact Jade on 07872 160992 / jade@healthyvalleys.org.uk

Or Willie on 01555 664211 / williew@cciweb.org.uk



Clydesdale Handy Folk

CCI & Healthy Valleys have a free home maintenance service to help older people in Clydesdale with small, non-emergency home maintenance jobs.

Energy Rebate Vouchers

On behalf of Advice Direct Scotland (ADS) can I bring to your attention that around one in five households with prepayment gas and electricity meters have not redeemed their energy rebate vouchers.

Advice Direct Scotland wants to make sure that households do not miss out and has urged Scots to:

- Check unopened mail, in case the vouchers have been missed.
- Check with energy suppliers, using contact details found on bills, statements, and official websites.
- Contact energyadvice.scot if there are any difficulties getting through to suppliers or resolving issues. The team can be contacted on 0808 196 8660
- (Monday to Friday, 9am-5pm), or through www.energyadvice.scot.

Please do not hesitate to get in touch with Conor Forbes on conor.forbes@advice.scot if you have any questions regarding Energy Vouchers or would like any further information about the wider work of Advice Direct Scotland.

The South Lanarkshire branch of the National Autistic Society is run by a committee of volunteers made up of autistic adults, parents of autistic children and people with an interest in autism. The main aim of the branch is to support and create opportunities for autistic people and their families in South Lanarkshire and to raise autism awareness. Below are a few updates on our plans for 2023.

Art and Craft Group

Our branch run a free, monthly arts & crafts groups for autistic individuals, we meet on the 2nd Saturday of each month both online and in person (see below for details)

2nd Saturday of the month: 10.15 - 11.30 online via zoom
(email the branch for joining details)


Face to Face sessions: 1pm -2.30pm also on the 2nd Saturday of the month:

Rutherglen United Reformed Church Hall, 69 Johnstone Drive, Rutherglen, Glasgow, G73 2QA

Autism Parent & Carer Facebook Group

We have created a Facebook group for support for parents and carers of autistic people, where you can share tips and strategies. You can access the forum on

<https://www.facebook.com/groups/438520978352655>




Online Parent and Carer Support
Via Facebook

Meet other parents and share experiences and find out about what's on offer in the community.

Available 24/7 from the comfort of your own home

Join the group
<https://www.facebook.com/groups/438520978352655>



Information regarding Scottish Autism Organisation:- https://twitter.com/FamilyFirst_ERC/status/1603089644903604227?t=Bm1CnBpaNU65Dr3uL-o2UA&s=09

https://www.southlanarkshire.gov.uk/info/200221/children_and_families/1695/autism/2

We also offer a signposting service to other autism providers locally and nationally who can offer specific support and advice. We provide information about where to access professionals and services located within the Health and Social Care Partnership, because we are part of it. One very valued service is the ARCH/Money Matters fast track where ARCH staff can refer individuals in need of money or benefits advice to locality advisors via the team manager.

ARCH staff also offer individual appointments for autistic people and their families and carers who might need additional one-to-one support, or just need a coffee and chat with someone who 'gets it'!

Is there anything ARCH does not offer?

ARCH is not a crisis intervention service or a replacement for targeted autism specific services such as the Community Paediatric Service, Occupational Therapy Service, Child and Adolescent Mental Health Services, Locality Adult/Children and Families Social Work or Educational and Clinical Psychology Teams.

Our intention is to work with all autism partners within the authority and wider community to co-design and deliver autism friendlier services which promote and protect the needs of those affected by autism within their own communities.

How do I access ARCH?

If you are a South Lanarkshire resident who is affected by or have an interest in autism indirectly or directly such as an autistic person, parent carer, sibling or carer that is all that is required.

Our service does not include North Lanarkshire.

If you reside in that area you should contact 'HOPE for Autism' (Phone: 01236 779191) which is the autism support service commissioned by Health and Social Care North Lanarkshire.

You can access ARCH by simply phoning, emailing, or making an appointment to visit the centre for an informal chat. We respect our autistic people's diverse communication styles and we will use whatever method best suits their preference.

ARCH staff are happy to give you further information if you give us a call, email, or simply pop into the ARCH centre weekdays between 9am – 3pm by appointment.

Our address

Reid Street, Burnbank, Hamilton, ML3 0RQ
(located directly behind Hamilton School for the Deaf/Glenlee Primary school)

Our phone number:
0344 225 1111

Our email address:
ARCH@southlanarkshire.gov.uk

SAIL Autism is a registered charity SC 046814
COAST Autism is a registered charity SC 050788



South Lanarkshire Health and Social Care Partnership



If you need this information in another language or format, please contact us to discuss how we can best meet your needs.

Phone: 0303 123 1015

Email: equalities@southlanarkshire.gov.uk

www.southlanarkshire.gov.uk

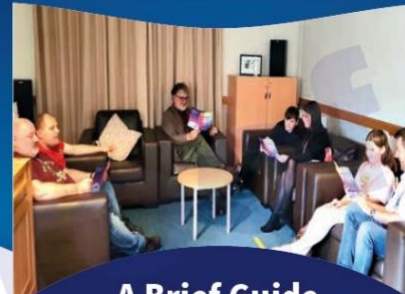


Printed on eco-friendly paper – please recycle

Produced for Social Work Resources by Communications and Strategy, 1635810022

ARCH

Autism Resources Coordination Hub



A Brief Guide for Autistic People, their Parent Carers and all Autism Community Stakeholders

What is ARCH?

The Autism Resources Co-ordination Hub (ARCH) is a South Lanarkshire Health and Social Care Partnership resource established in 2016 to support autistic people of all ages, their parent carers and extended networks. We offer a range of supports and services provided collaboratively by parent led groups, the voluntary sector, statutory sector, and our own ARCH staff.

ARCH offers support and advice to autistic people across their lifespan, as well as those supporting them at every life stage 'holding the hands of those holding the hands'.

Who are the ARCH staff?

Our small three-person full-time ARCH team are employed by South Lanarkshire Health and Social Care Partnership and comprise a Co-ordinator and two Resource Workers with autism experience.

What does ARCH offer?

There are various community-led supports based in ARCH and hosted within our small and homely centre by staff and other stakeholders which includes two registered autism charities SAIL Autism and COAST Autism as well as several other autism community-led groups.

ARCH also undertakes staff development training and awareness raising with interested agencies and stakeholders in all sectors. Past attendees have included the Scottish Ambulance Service, NHS Lanarkshire Health Visitor Student Nurses, the Procurator Fiscals Service and Morgan Stanley Investment Bank.

ARCH sends out regular dispatches via our email distribution list (currently 1800 people and growing every week) in relation to all autism-related developments locally, nationally and internationally.

ARCH staff run our telephone advice and support service every weekday during office hours and respond to hundreds of email enquiries, supplying valuable and informative links to resources and services, as well as offering much-needed autism-informed advice and guidance during the 'pre' 'mid' and 'post' diagnostic stages. The fact we are part of South Lanarkshire Health and Social Care Partnership means we can establish quicker links with other authority resources.

ARCH brings all stakeholders in the autism community together to raise the profile of our autistic people, striving to consciously contribute to greater inclusion, understanding and awareness.

Centre-based supports include:

- The ARCH (in-person) Parent Carer Support group – Mondays 10am – 12pm facilitated by ARCH staff
- The ARCH online ZOOM support sessions - Wednesdays 11am – 12pm, facilitated by ARCH staff
- A parent carer-led (in-person) peer support group delivered by COAST (Champions of Autism Spectrum Together) – every second Wednesday evening 6.30pm – 8.30pm
- The SAIL 'Teen Crew' – (in-person) volunteer led social activity group providing support to autistic teens in South Lanarkshire – Mondays and Wednesdays
- The SAIL 'Crew' (in person) volunteer led support group for young autistic adults up to age 24 – Thursday evenings – 7pm – 9pm
- The Social Inclusion Project (SIP) led by a member of the SLC Supported Employment Team alongside young autistic adults who provide peer mentoring for younger autistic people making their transition from full time education to further/higher education, training or employment
- Sanderson Additional Support Needs (ASN) high school (in-person) Transition group for S5 and S6 young people with Autism and co-occurring learning difficulties – Mondays – 11.30am – 2.30pm

- NHS Lanarkshire Occupational Therapist led Life Skills workshops – quarterly in ARCH

- ARCH staff contribute to the National Autistic Society 'Early Bird,' 'Early Bird Plus' and 'Early Bird: Teen Life' programmes delivered by group facilitators drawn from Education, Youth and Family Community Learning Services and Social Work Resources located within localities

- The COAST (in-person) volunteer led social interaction 'in-betweeners' group for young autistic people in secondary school, and in need of social interaction – Fridays 4pm – 6pm

- Various workshops and presentations by a range of agencies on a rolling basis. Previous presentations amongst many, have been made by Social Security Scotland, CEOPS (Child Exploitation and Online Protection Service), Child and Adolescent Mental Health Services (CAMHS), Education Inclusion Services and The Family Fund

- The South Lanarkshire Autistic Female Engagement (SAFE) (in-person) group – facilitated by a female ARCH staff member, supporting autistic adult females – every second Friday 12pm – 2pm

- The ARCH Autistic Male Adult (in-person) support group – facilitated by a male ARCH staff member every Thursday or Friday 11.30am – 1pm.

Community-led, collaborative support

ARCH works alongside our autistic people, parent carers, voluntary organisations, and statutory colleagues to identify unmet need within the autism community. We collaborate to address self-identified gaps in support provision, then set about co-delivering programmes intended to improve the lived experiences for all autistic people in South Lanarkshire.



a range of training opportunities across Lanarkshire Get Self Help: (www.getselfhelp.co.uk/) Provides Cognitive Behaviour Therapy (CBT) self-help and therapy resources Headspace:

MoodJuice: www.moodjuice.scot.nhs.uk Web site offering information, advice to those experiencing troublesome thoughts, feelings and actions.

Online help from NHS Lanarkshire Psychological Services:
www.lanarkshiremindmatters.scot.nhs.uk

NHS Inform: www.nhsinform.scot/healthy-living/mental-wellbeing 10 stress busters. Breathing and Relaxation Exercises for Stress Dealing with Traumatic Events Why do I feel anxious and panicky Low Mood and Depression Exercise for Depression SAMH: (<https://www.samh.org.uk/about-mental-health>) Self-help & Wellbeing (<https://www.samh.org.uk/about-mental-health/self-help-and-wellbeing>)

SHOUT: 85258 free confidential, 24/7 text messaging support service for anyone who is struggling to cope. They support people who are anxious, stressed, depressed, suicidal or overwhelmed and in immediate support

Other Useful numbers

Well-Informed: Well-informed@samh.org.uk 0800 073 0918 Mental Health information service

SAMH: www.samh.org.uk 0800 917 3466 Scottish Association for Mental Health

Child Line: www.childline.org.uk 0800 1111

Parent Line: parentlinescotland@children1st.org.uk 0800 28 22 23 Mon – Fri 9am – 9pm,
Sat-Sun 9am to noon

NHS24 www.nhs24.com 111

Police: 999 or 101

PAPYRUS: www.papyrus-uk.org Prevention of young suicide
~~Helpline~~ 0800 068 4141 (9am – midnight)

CRUSE: www.crusescotland.org.uk 0845 600 2227

Petal www.petalsupport.com (People experiencing trauma & loss)

Survivors of Bereavement by Suicide: www.uk-sobs.org.uk 0844 561 655 (9am-9pm)

In Care Survivors Service Scotland: www.incaresurvivors.org.uk 0800 121 6027

Local Healthy Living Initiatives: Community based health initiatives offering a variety of wellbeing opportunities.

Healthy & Happy Cambuslang and Rutherglen Community Health Initiative
www.healthynhappy.org.uk 0141 641 5236

Healthy Valleys – www.healthyvalleys.org.uk 01555 880 666

Clydesdale Community Initiative : www.cciweb.org.uk 01555 664 211

Getting Better Together Shotts Healthy Living Centre: www.shottshealthyiving.com 01501 825 800

Online Mental Health Resources Raising Awareness of Mental Health and Suicide Prevention – animated videos for practical advice about how to support people who may be feeling suicidal or experiencing mental distress. Created by Health Scotland and NHS Education Scotland.

- Ask, Tell - Look After Your Mental Health: understanding mental health and keeping mentally healthy: <https://vimeo.com/338176495>
- Ask, Tell - Have a Healthy Conversation: supporting compassionate conversations with people who may be experiencing mental distress or who are at risk of suicide: <https://vimeo.com/338176444>
- Ask, Tell - Save a Life: Every Life Matters: suicide prevention and keeping people safe: <https://vimeo.com/338176393>

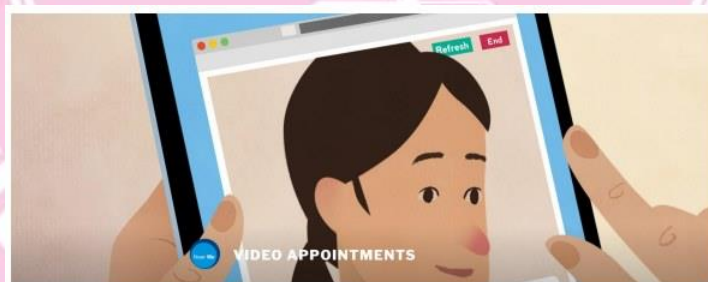
ACF -information about the Family Fund

Family Fund provides families raising a disabled, or seriously ill, child on low incomes with wide-ranging grants for essential items. Whether you need a kitchen appliance, like a fridge, cooker or washing machine, clothing and bedding, sensory or play equipment or technology for your child or a much-needed family break, we are here to help.

You can apply for any items that will help meet your child's additional support needs.

If you live in England, Scotland or Northern Ireland Grants you can apply for: Family breaks, clothing, computers and tablets, days out, recreational and household items, kitchen appliances, sensory toys and equipment, games, books and music, games consoles, outdoor play and leisure facilities, specialist bikes or tricycles, garden improvements or driving ambitions.

<https://www.familyfund.org.uk/>



Near Me in Biggar Library

Near Me is a video calling service used by many health and public services.

You may have been offered your hospital appointment by Near Me but don't have a laptop, iPad or smart phone to do it on. You might not have the data or Wi-Fi to be able to join the call or you may not have the private space to make the call or are unsure of what to do. You can now book a Near Me space in Biggar Library. We have an iPad & Wi-Fi available to help you join your Near Me appointment from a private space in the Library.

For more information about Near Me in general visit the website www.nearme.scot using the QR code.



For more information and how to book the Near Me space, please ask a member of the library staff biggar@library.s-lanark.org.uk or telephone 01899 222060.



LET'S CONNECT CLYDESDALE/LANARK PARENTS & CARERS



Want to learn about children
and young people's mental
health?

Fancy some tips on how to
speak to your child about
their feelings?

If yes, then come along to our FREE 90 minute workshops:

- **Mental health awareness**
- **Understanding and managing stress and anxiety**
- **Listening to and supporting my child**
- **Managing my wellbeing**

Our workshops are information sessions and
parents/carers are not expected to share
personal stories. We will however be giving out
lots of useful information and support links.

**LET'S
CONNECT**

**To book a space
use this QR code or
link below**



www.eventbrite.com/o/samh-lets-connect-team-clydsdale-69441409893

**We have lots going on at Let's
Connect. For more information
on upcoming workshops and
events contact:**

Aaron Sloan
Let's Connect Officer
Tel: 07788 747980
Email:
aaron.sloan@samh.org.uk

SAMH is the Scottish Association for Mental Health, Scottish
Charity No. SC008897. Registered Office: Brunswick House 51
Wilson Street, Glasgow G1 1UZ. SAMH is a company limited by
guarantee registered in Scotland No 82340.